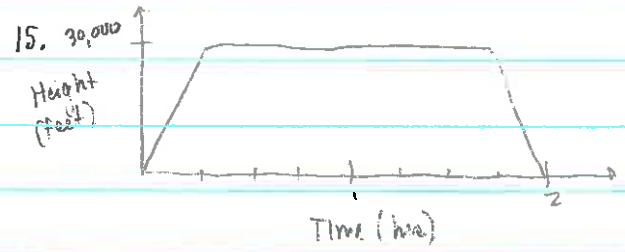


Algebra 1 (Lesson 3.1)

1. Segment 1 is steeper than segment 2 which means more people were entering at a faster rate.
2. The game just ended so people are exiting quickly.
3. No fans are coming or going.
4. A few fans decided to leave before the end of the game.
5. C
6. Graph A - she moves at a constant rate.
Graph B - she runs first, then walks, then bikes, then runs again.
Graph D - she starts slow then gradually gets faster.
7. B
8. Graph A - she only runs or only walks.
Graph D - she starts walking then speeds up to a run.
9. A
10. Graph B - increases throughout the season.
Graph C - increases at a constant rate.
Graph D - no increase/distance, then almost dies up, then increases and levels off.
11. Graph B - a rapid increase of water
Graph C - steady increase of water
Graph D - drop in water throughout the season
12. A
13. Graph B - after a certain number of cups, the profit will level off
Graph C - the number of cups and profit are rising consistently
Graph D - the profit will stay the same no matter how many cups are sold.

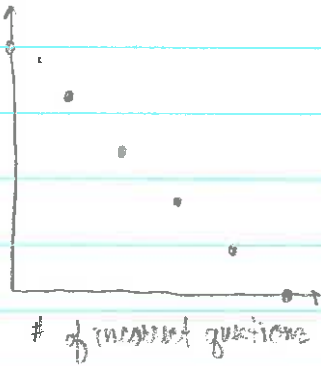
14. Discrete

16. Continuous



18.

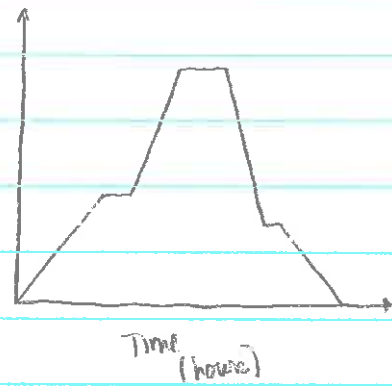
Amount of money



19. Discrete

21.

Height (feet)



22. Continuous